

NOTES

- 梱包数量: 1,000個/リール
NUMBER OF CONNECTOR: 1000PCS/REEL
- リードテープ長さ
LEAD TAPE LENGTH

トップテープ未接着部
TOP TAPE
NON-BONDED PART
2.5±1.0

空インボス 20~25PCS.
NUMBER OF EMPTY PART

部品挿入部
COMPONENT
SUPPLIER

末端部
(空部)
TAIL PART
(EMPTY)
360 ±35

3. トップテープの剥離強度: 0.6±0.35N(60±35gf) (剥離方向は下図参照)
PEELING OFF FORCE OF TOP TAPE: 0.6±0.35N(60±35gf)
(PEELING DIRECTION IS SHOWN IN FOLLOWING FIG.)

<剥離速度: 300mm/min (参考)>
PEELING SPEED: 300mm/min
(REFERENCE)

引き出し方向
PULL OUT DIRECTION

剥離方向
PEEL OFF
DIRECTION

4. 53398-**10 の詳細寸法については図面SD-53398-**10 を参照下さい。
RE DETAILED DIMENSIONS, SEE SD-53398-**10.

5. 材料 (MATERIAL)
キャリアテープ (CARRIER TAPE): ポリプロピレン (POLYPROPYLENE)
トップテープ (TOP TAPE): PET, PE, PEF
リール (REEL): ポリスチレン (PS) <リサイクル材含む>
POLYSTYRENE (PS) <RECYCLE MATERIAL CONTAINED>

引き出し方向
PULL OUT DIRECTION

剥離方向
PEEL OFF
DIRECTION

引き出し方向
PULL OUT DIRECTION

剥離方向
PEEL OFF
DIRECTION

引き出し方向
PULL OUT DIRECTION

剥離方向
PEEL OFF
DIRECTION

引き出し方向
PULL OUT DIRECTION

剥離方向
PEEL OFF
DIRECTION

引き出し方向
PULL OUT DIRECTION

剥離方向
PEEL OFF
DIRECTION

キヤリアテープ幅 CARRIER TAPE WIDTH	D	(C)	(B)	(A)	ENG. NO.	種数 CKT.
16	17.4	3.7	9.5	5.8	53398-0390	3
		2.45	8.25	4.55	53398-0290	2

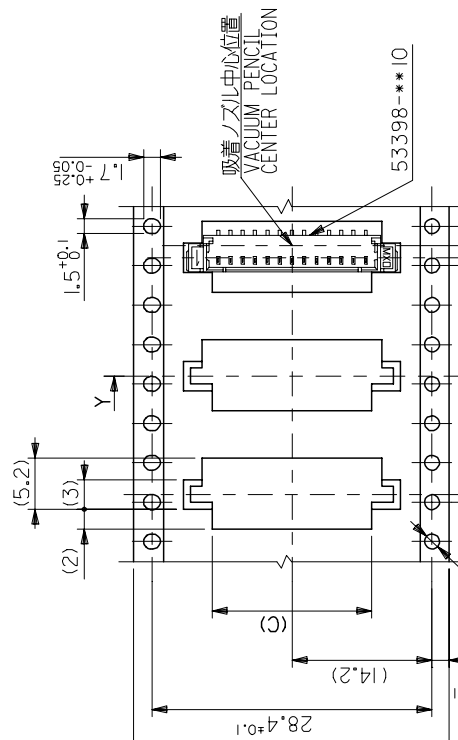
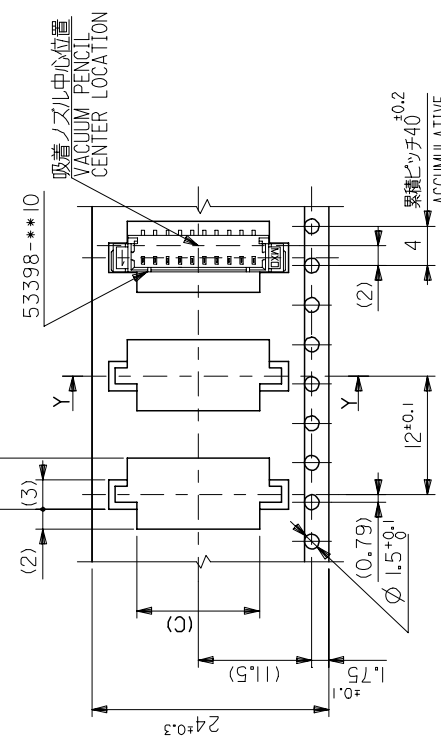
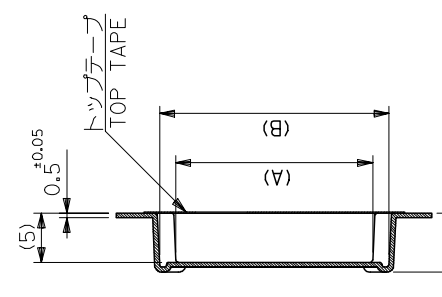
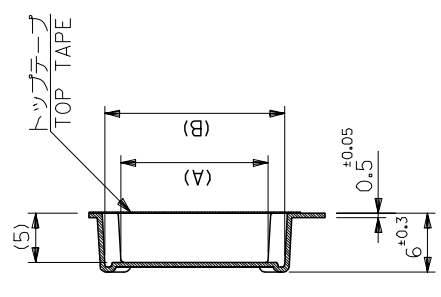
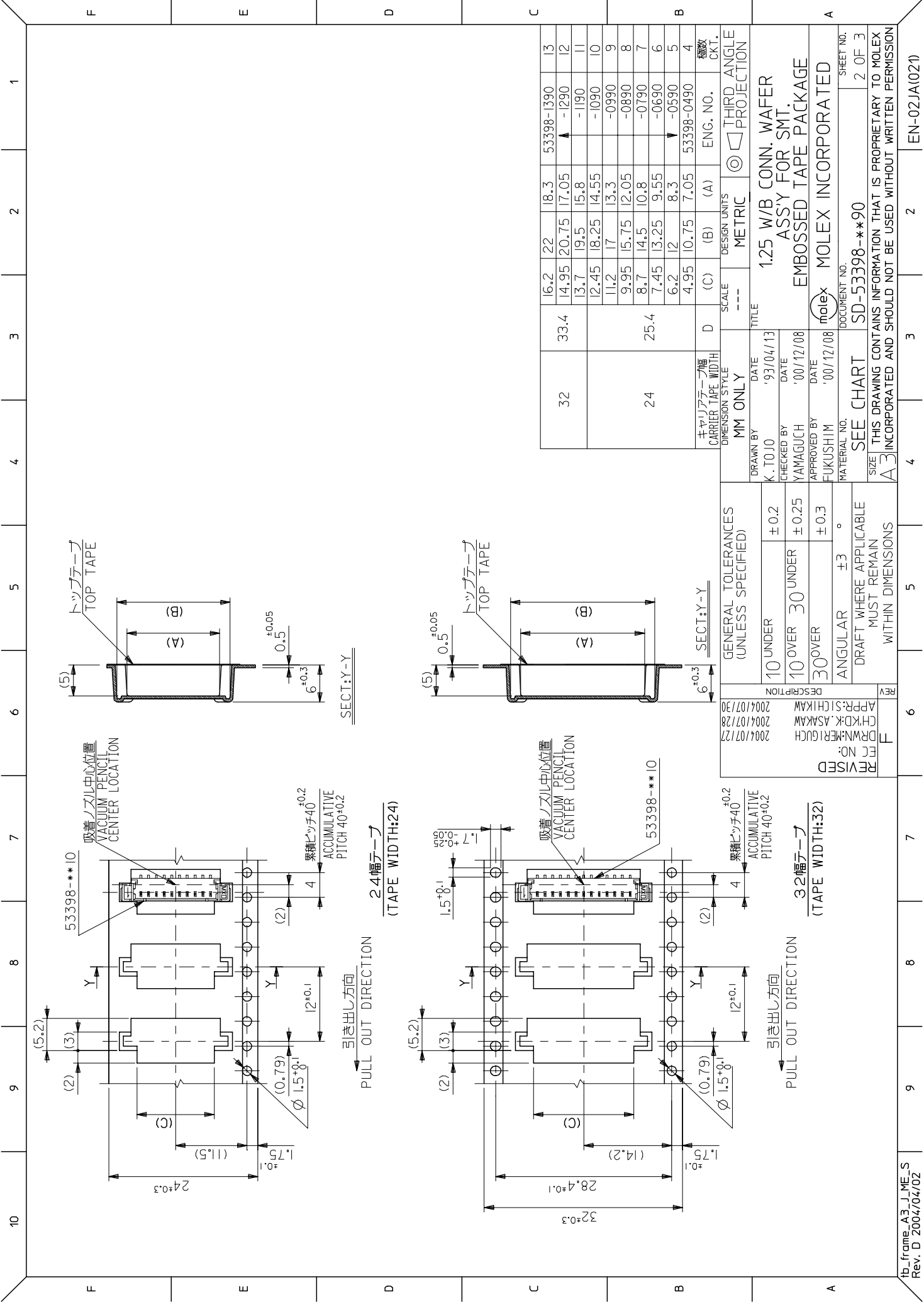
MM ONLY	SCALE	DESIGN UNITS	METRIC	THIRD ANGLE PROJECTION
DRAWN BY K. TOJO	DATE '93/04/13	TITLE 1.25 W/B CONN. WAFER ASS'Y FOR SMT.		
CHECKED BY YAMAGUCHI	DATE '00/12/08	EMBOSSED TAPE PACKAGE		
APPROVED BY FUKUSHIMI	DATE '00/12/08			
MATERIAL NO.	DOCUMENT NO.			
SEE CHART	SD-53398-**90			
SHEET NO. 1 OF 3				

GENERAL TOLERANCES (UNLESS SPECIFIED)
10 UNDER ±0.2
10 OVER 30 UNDER ±0.25
30 OVER ±0.3
ANGULAR ±3°
DRAFT WHERE APPLICABLE MUST REMAIN WITHIN DIMENSIONS

REV	DESCRIPTION
F	REVISED
	EC NO.
	DRWNG: KERRI GUCH
	CHKD: K. ASAKAWA
	APP: S. CHIKAWA
	2004/10/28
	2004/10/28

1.6mmテープ
(TAPE WIDTH: 16)

引き出し方向
PULL OUT DIRECTION

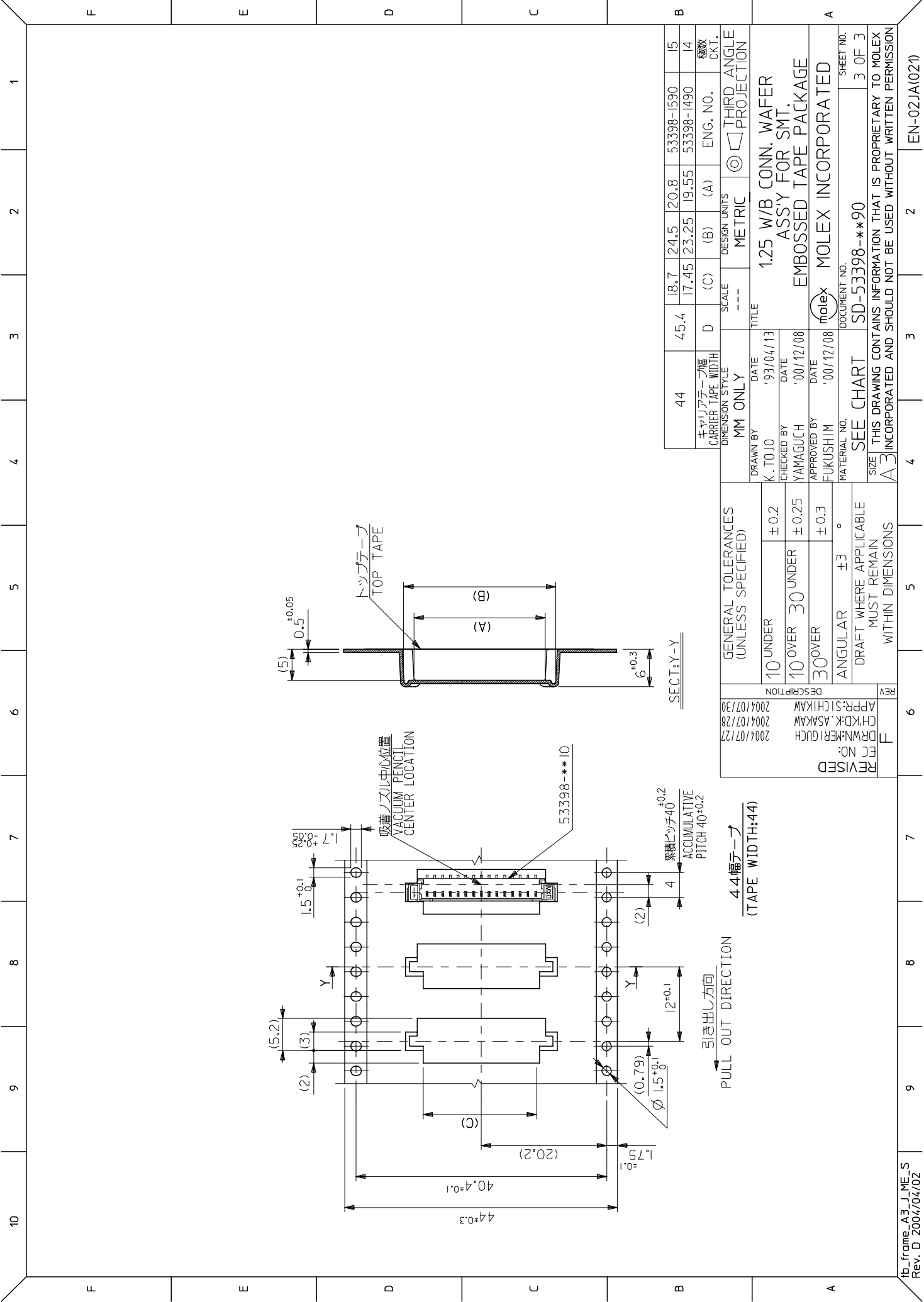


32	33.4	16.2	22	18.3	53398-1390	13
		14.95	20.75	17.05	-1290	12
		13.7	19.5	15.8	-1190	11
		12.45	18.25	14.55	-1090	10
		11.2	17	13.3	-0990	9
		9.95	15.75	12.05	-0890	8
		8.7	14.5	10.8	-0790	7
		7.45	13.25	9.55	-0690	6
		6.2	12	8.3	-0590	5
		4.95	10.75	7.05	53398-0490	4

キャリアテープ幅 CARRIER TAPE WIDTH	D	(C)	(B)	(A)	ENG. NO.	機軸 CKT.
DIMENSION STYLE	MM ONLY	SCALE	---	DESIGN UNITS	METRIC	THIRD ANGLE PROJECTION
DRAWN BY	K. TOJO	DATE	'93/04/13	TITLE	1.25 W/B CONN. WAFER ASS'Y FOR SMT.	
CHECKED BY	YAMAGUCHI	DATE	'00/12/08	EMBOSSSED TAPE PACKAGE		
APPROVED BY	FUKUSHIM	DATE	'00/12/08	MOLEX INCORPORATED		
MATERIAL NO.	SEE CHART	DOCUMENT NO.	SD-53398-**90	SHEET NO.	2 OF 3	
SIZE	THIS DRAWING CONTAINS INFORMATION THAT IS PROPRIETARY TO MOLEX INCORPORATED AND SHOULD NOT BE USED WITHOUT WRITTEN PERMISSION					

GENERAL TOLERANCES (UNLESS SPECIFIED)	10 UNDER ±0.2
	10 OVER 30 UNDER ±0.25
	30 OVER ±0.3
ANGULAR	±3°
DRAFT WHERE APPLICABLE MUST REMAIN WITHIN DIMENSIONS	

REV	DESCRIPTION
F	REVISED
	PC NO.
	DRWNG: YAMAGUCHI
	CHKD: ASAKAWA
	APP: S. CHIKAWA
	2004/107/28
	2004/107/30



PULL OUT DIRECTION
44幅テープ
(TAPE WIDTH:44)

REV	DESCRIPTION
F	REVISED
	FC NO.
	DRWNG:KERRI GUCH 2004/07/27
	CHKD:K. ASAKAW 2004/07/28
	APP: S. CHIKAW 2004/07/30

GENERAL TOLERANCES (UNLESS SPECIFIED)		
10 UNDER	±0.2	
10 OVER	30 UNDER	±0.25
30 OVER	±0.3	
ANGULAR	±3 °	
DRAFT WHERE APPLICABLE MUST REMAIN WITHIN DIMENSIONS		

DRAWN BY		DATE		TITLE	
K. TOJO	'93/04/13	1.25 W/B CONN. WAFER ASS'Y FOR SMT. EMBOSSED TAPE PACKAGE			
CHECKED BY		DATE		DOCUMENT NO.	
YAMAGUCHI	'00/12/08			SD-53398-**90	
APPROVED BY		DATE		SHEET NO.	
FUKUSHIM	'00/12/08			3 OF 3	
MATERIAL NO.		SEE CHART		INCORPORATED AND SHOULD NOT BE USED WITHOUT WRITTEN PERMISSION	

44	45.4	18.7	24.5	20.8	53398-1590	15
キャリアテープ幅 CARRIER TAPE WIDTH	D	(C)	(B)	(A)	ENG. NO.	種数 CKT.
MM ONLY	SCALE	DESIGN UNITS		THIRD ANGLE PROJECTION		
	---	METRIC				